



BD2 two displacements hydr. Motor plus WR21

WR21 Gearbox

5,25:1

Ratio/Rapp.Riduzione

Nominal Displ./Cilindrata

Nominale

		2600	1300	900	650	1800	900	650	600
Displacement/Cilindrata	cc/rev	2588	1297	908	635	1822	908	635	574
Equiv. Specific Torque/Coppia Specifica Equivalente	Nm/bar	40,39	20,24	14,17	9,91	28,43	14,17	9,91	8,98
Peak pressure / Pressione Picco	bar	350				350			
Max Speed (Off The G.Box)/Velocità Max.(Al Riduttore)	rpm	150	280	280	280	190	280	280	280
Peak Power/Potenza Picco	kW	70				70			

Approximate weight: 185 Kg.
Max. casing pressure: 1 bar continuous
5 bar peak

Peso approssimato: 185 kg
Max.pressione in carcassa: 1 bar Continuo
5 bar Picco

Lubricant SAE W80/90
Max oil temperature 80°C
Viscosity 80/90 EP

Lubrificante SAE W80/90
Max temperatura olio 80°C
Viscosità 80/90 EP

Max.speed to be revised according to distributor's and valves' flow capability.

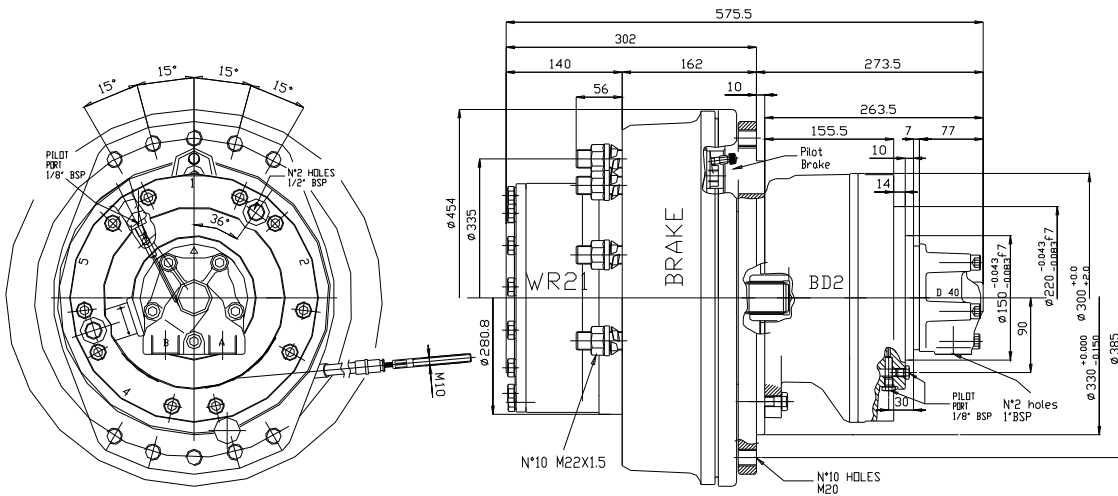
Velocità massima da adattare alla portata del distributore e delle valvole.

Product components

- WR 21 gearbox
- BD2 Hydraulic motor series
- standard fitting with D40 distributor .

Features

- Including positive drum brake :
Max. service and parking braking torque 12000 Nm
- Suitable for special distributor blocks designed to include valve cartridges
- Overall dimensions and weight lower than direct drive units.
- Available stainless steel sleeve on shaft seal easy to replace without disassembling the gearbox.
- High radial load capability and long life bearings.



Max. Radial load (daN)
Massimo carico radiale (daN)

